

A WORKING MODEL OF THE WORLD

15 June - 22 September 2018
LifeSpace University of Dundee

A Working Model of the World goes on display

University of Dundee Press Release
Published On **Wed 13 Jun 2018** by Dominic Younger

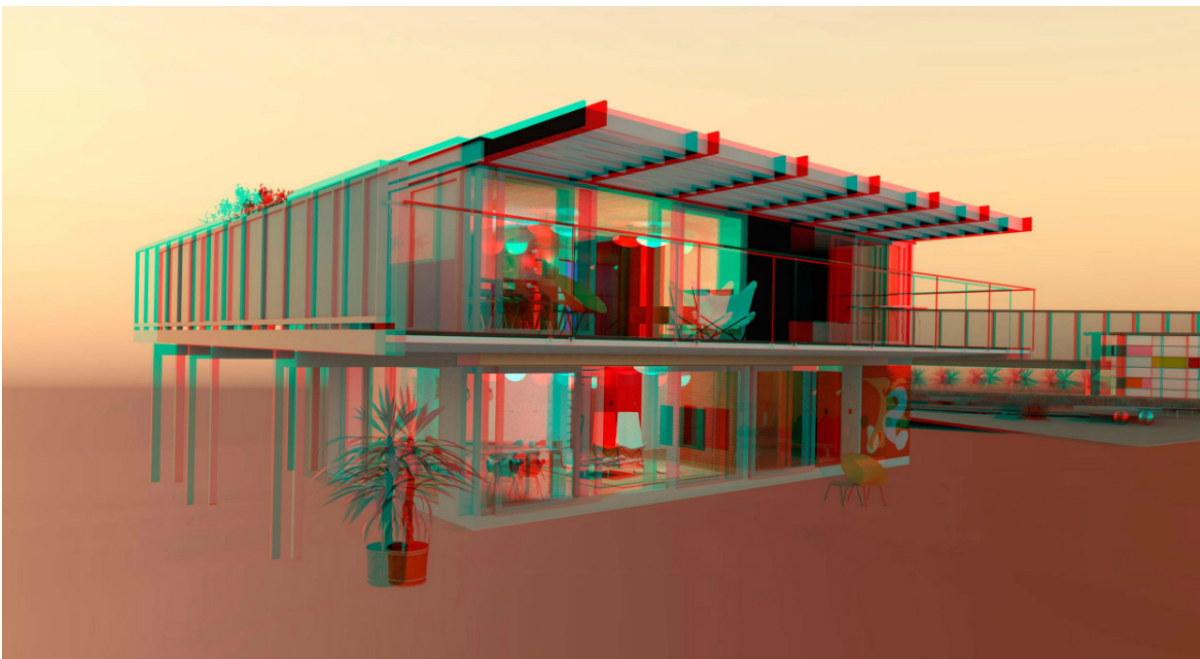


Image courtesy of Sascha Pohflepp & Chris Woebken

Small may be beautiful but a larger than life exhibition at the University of Dundee will chart the major role that miniature models play in shaping our world.

A Working Model of the World will open to the public at the University's LifeSpace Gallery on Friday 15 June and will be on display until Saturday 22 September 2018. The exhibition presents new and existing works by leading Australian, New Zealand and North American artists who examine the way models help us make sense of the world.

The show is curated by Dr Lizzie Muller from the University of New South Wales in Sydney Australia and Holly Williams from The Curators' Department in collaboration with LifeSpace Gallery at the University of Dundee.

Dr Muller said, "Modelling is an activity that is common to all humans - from children rolling plasticine to experimental physicists predicting the existence of particles. This form of three-dimensional thinking exists across all disciplines, from architecture to social science, botany to economics.

“The impact of modelling on our daily life is powerful and far-reaching – from understanding climate change and predicting its impacts, to planning the distribution of health resources. Many contemporary data-driven models will remain invisible to us whilst determining fundamental aspects of our lives.”

Exhibited alongside these contemporary artworks are models actively used by research and teaching staff at the University, as well as, historical models from the University’s museum collections.

LifeSpace curator Dr Sarah Cook said, “Models are a powerful subject for an exhibition to explore. This exhibition draws on Dundee’s intellectual heritage as well as its innovative contemporary research.

“We are thrilled to be bringing to Dundee, a UNESCO City of Design, this exhibition that shows how designed objects are used to discover and communicate across all areas of human endeavour.”

A preview of A Working Model of the World, including a tour with the curators, will take place on Thursday 14 June at LifeSpace Gallery, between 5-7pm.
The exhibition opens to the public on Friday 15 June 2018.

For media enquiries contact:
Dominic Younger
Media Relations Officer
University of Dundee
Nethergate, Dundee, DD1 4HN
Tel: +44 (0)1382 385131
Email: d.younger@dundee.ac.uk

A Working Model of the World in Dundee features art works by Maria Fernanda Cardoso, Kate Dunn, caraballo-farman, Emily Floyd, Jo Law, Sascha Pohflepp & Chris Woebken, and Karolina Sobecka alongside models from the University collections and research and teaching staff at Dundee. Curated by Dr Lizzie Muller (UNSW Art & Design) and Holly Williams (The Curators’ Department) with LifeSpace. A Working Model of the World was developed in partnership with UNSW Galleries, Sydney and Sheila C. Johnson Design Centre, The New School, New York. This exhibition is supported by the Wellcome Trust Institutional Strategic Support Fund (ISSF) at University of Dundee's School of Life Sciences.